



SRM
UNIVERSITY AP
— Andhra Pradesh

AN ACADEMIC JOURNEY THROUGH

INNOVATION,
RESEARCH &
GLOBAL IMPACT

A Trendsetter in New-Age Education



**Sarvepalli Radhakrishnan Academic Block,
SRM University-AP, Amaravati Campus**



SRM University-AP, Amaravati Campus, Entrance



Dr P Sathyanarayanan **Pro Chancellor**

SRM University–AP was not built to follow a template. It was imagined as a living space—where learning is not delivered but discovered, where individuals don't just prepare for the world, but begin shaping it.

In just seven years, we've seen this vision take form—not through milestones but through meaning. At SRM, we believe education must be a process of becoming—a journey that evolves with each learner, shaped not by certainty but by engagement, effort, and inner clarity.

Each person has a role in the larger movement of life. Learning is their right; evolution is their path. We do not shape students to fit. We ask them to question, explore, and move forward from within.

We may be small in scale, but our impact must be enduring. Life is a struggle—not against each other, but against the weight of limitation. Every human being has the right to fight to live fully. And in recognising that right for ourselves, we must respect it in others. We teach not to conquer, but to strengthen. Not to command, but to clarify. Power, if it comes, must serve—not suppress.

Our curriculum, mentors, and spaces remain open to change. We listen, adjust, and act—just as life does. In this evolving environment, SRM AP stands as a bridge between ideas and action, between individual aspiration and shared relevance.

Our students don't just graduate. They contribute. They research, build, serve, and question. Our faculty don't just teach. They walk alongside—steady, rigorous, human.

We are not proud of our arrival. We are invested in becoming. Ours is not a fixed institution—it is a moving process. And we remain committed to keeping that process honest, open, and alive.

In a world where little is certain, we hold to one truth: learning must continue. Education must liberate. And evolution must remain the ultimate goal.



Redefining Learning: A MOVEMENT THAT TRANSFORMS EDUCATION

With a commitment to innovation, research, and holistic development, SRM University-AP, Amaravati, empowers students to emerge as future leaders. The interdisciplinary curriculum, world-class faculty and global collaborations create a dynamic learning environment. The university nurtures entrepreneurial spirit, critical thinking and creativity, preparing students for real-world challenges. From cutting-edge research to vibrant campus life, SRM University-AP is sculpting the next era of education.

THE KEY FEATURES

100

Acres of
State-of-the-Art
Campus

70+

Global University
Partnerships

440+

Research
Scholars

11,000+

Ambitious
Students

500+

Distinguished
Faculty Members

70+

Cutting-Edge
Laboratories
Fueling Innovation

THE BACKBONE OF STUDENT SUCCESS

VISION

To emerge as a world-class university in creating and disseminating knowledge and providing students a unique learning experience in their chosen field of scholarship that would best serve society and the betterment of mankind.

MISSION

Develop into an inter-disciplinary institute combining academic rigour, excitement of discovery, creativity and entrepreneurship. Deliver world-class research-based education, creating new knowledge and innovations. Provide an inspiring and stimulating environment for the diverse campus community of faculty and students.



FROM BIG IDEAS TO BOLD OUTCOMES

Spread over 100 acres of the State-of-the-Art global standard campus, SRM University-AP, Amaravati, is a multi-stream research-intensive university established in 2017. The university has three schools, viz., the School of Engineering and Sciences, the Easwari School of Liberal Arts and the Paari School of Business. With a strong base of 500 highly qualified faculty members and 440+ PhD and postdoctoral fellows, the university is striving towards academic excellence on all fronts. The focus is on experiential and project-based learning, pure and applied research, problem-solving spirit, innovation and entrepreneurship and cross-disciplinary studies. The university has established a research ecosystem that is designed to be accessible and supportive, offering opportunities for involvement and assistance at every level of academia, viz., faculty members, postdoctoral fellows, Ph.D. scholars and postgraduate & undergraduate students.

THE FIVE STRATEGIC GOALS ARE:

- Enhance Student Experience
- Improve Perception & Visibility
- Achieve Academic Excellence
- Attain Financial Sustainability
- Intensify Research, Innovation & Entrepreneurial Spirit

VALUES THAT LEAD, IMPACT THAT LASTS

Built on a foundation of integrity and curiosity, the university fosters trust, respect and compassion— instilling a deep sense of social responsibility in all they do. SRM-AP is dedicated to creating an inclusive and ethical environment where individuals are empowered to think critically, act with empathy and contribute meaningfully to society. By upholding these values, the university inspires innovation, collaboration and a lasting positive impact on communities.

- Show Compassion
- Develop Trust
- Give Mutual Respect
- Create a Sense of Curiosity
- Serve with Integrity
- Instill Social Responsibility

GOVERNING BODY



Dr T R Paarivendhar
Chancellor



Dr P Sathyanarayanan
Pro Chancellor



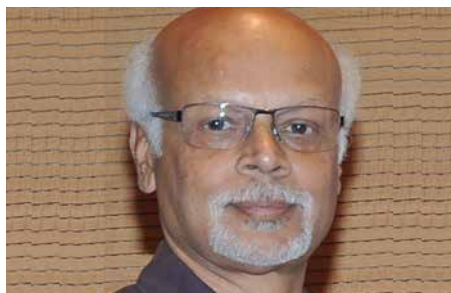
Dr Nicholas B. Dirks
Emeritus Chancellor, University of
California, Berkeley, USA



Prof. Prasant Mohapatra
Vice Chancellor for Research,
Provost, University of South
Florida, Tampa, USA



Dr Pradeep Khosla
Chancellor, University of
California, San Diego, USA



Prof. Krishna N Ganesh
Former Director, IISER, Tirupati



Prof. Suzanne Fortier
Vice Chancellor, McGill
University, Canada



Prof. Soumitra Dutta
Peter Moores Dean & Professor
of Management, Saïd Business
School, University of Oxford, UK



Prof. Andrew D Hamilton
President of New York
University, USA



Prof. UB Desai
Chancellor, Anurag University
Hyderabad & Ex. Director, IIT
Hyderabad, Telangana, India



Prof. B S Murthy
Director, Indian Institute of
Technology, Hyderabad



Prof. Chandra Shekhar
Advisor- Academics, Research
and Innovation, BITS Pilani,
Pilani Campus

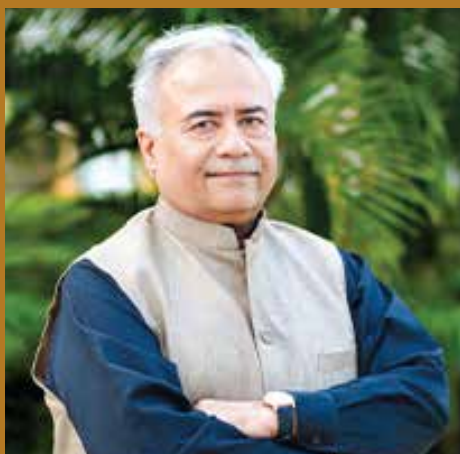


Prof. N Balakrishnan
Indian Institute of Science,
Bangalore



Dr C Muthamizhchelvan
Vice Chancellor, SRMIST, Chennai

CHARTING NEW HORIZONS IN ACADEMIA



Prof. Manoj K Arora
Vice-Chancellor



Prof. Ch. Satish Kumar
Pro Vice-Chancellor



Prof. C V Tomy
Dean - School of Engineering
and Sciences



Dr S V Ramana Rao
Dean (I/C)- Paari School of
Business



Prof. Vishnupad
Dean - Easwari School of
Liberal Arts



Prof. Ranjit Thapa
Dean - Research



Dr Vinayak Kalluri
Dean - Academic Affairs &
Additional Registrar



Prof. Sheela Singh
Controller of Examinations



Dr B Siva Kumar
Associate Dean - Academic
Affairs



Dr Karthik Rajendran
Associate Dean - Quality
Assurance and Rankings



Prof. Jayaseelan Murugaiyan
Associate Dean – SEAS
(Admission Outreach and
Research Collaborations)



Prof. G S Vinod Kumar
Associate Dean - Technology
Transfer Cell



Dr Jatindra Kumar Dash
Associate Dean – SEAS (Academic
Operations and Graduate Outcome



Prof. Vandana Swami
Associate Dean (Academic
Operations and Outreach) -
Easwari School of Liberal Arts



Dr R Premkumar
Registrar



Mrs Suma N
Chief Finance and Accounts
Officer (CFAO)



Prof. Y Siva Sankar
Director - Admissions



Mr Isaac Samala Gerard
Director - HR



Prof. Sidharth Shankar Tripathy
Director - Entrepreneurship and
Innovation



Dr M S Vivekanandan
Director - CR & CS (Placements |
Internships | Corporate Connects)



Mr Pankaj Belwariar
Director - Communications



Mr Anup Singh Suryavanshi
Director - Campus Life &
Maintenance Director (I/C) Sports



Mr Roysten Fernandes
Director (I/C) – ITKM



Mr Lakshmi Narasimhan
Director (I/C) - IR & HS



Major General Gurdeep Singh Narang
Director – Students Affairs



Dr S Mannathan
Associate Director - Teaching
Learning Centre



Dr Tousif Khan
Associate Director – Faculty
Affairs



Dr Satish Anamalamudi
Assistant Director - Alumni
Relations

THE POWER OF KNOWLEDGE: SRM'S ACADEMIC ECOSYSTEM

SRM University-AP, Amaravati, is dedicated to academic excellence and application-based learning to provide students with global exposure and practical experience. The vision: interdisciplinary learning, social responsibility and innovation offers research-centric programmes at all three levels: Undergraduate, Postgraduate and Doctoral.

The Outcome-Based Education (OBE) model at the university ensures that its avid learners gain theoretical and practical skills with a flexible curriculum that combines industry exposure, internships and entrepreneurship opportunities. With highly advanced infrastructure, world-class faculty and active learning tactics, SRM University-AP, Amaravati hones critical thinking, employability and innovation, which prepares learners to excel in a fast-paced world.

This vision is brought to life through the university's four dynamic academic divisions:

School of Engineering & Sciences (SEAS):

Focused on cutting-edge STEM education, research and innovation.

Easwari School of Liberal Arts (ESLA):

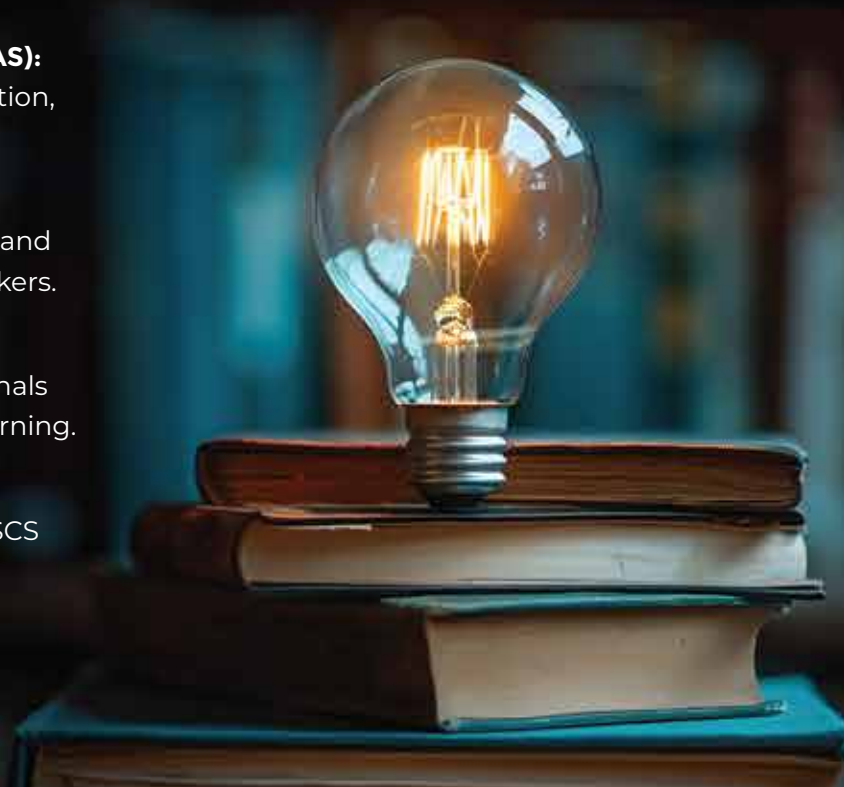
Encourages inter-disciplinary learning and fosters socially conscious, creative thinkers.

Paari School of Business (PSB):

Builds future-ready business professionals through experiential and analytical learning.

AI Institute:

A landmark collaboration with CMU's SCS for AI education and research.





SCHOOL OF ENGINEERING & SCIENCES (SEAS)

The School of Engineering and Sciences (SEAS) at SRM University-AP, Amaravati, provides a conducive learning environment for its students to pursue their education, reveal hidden skills and find out latent research abilities, all to produce entrepreneurs, leaders, researchers, academicians and icons of tomorrow. With interdisciplinary research-based approaches and scrupulously structured curricula, SEAS supports its students in choosing majors, minors and specialisations in Artificial Intelligence & Machine Learning, Data Science, IoT, Cybersecurity, Microelectronics, Semiconductors etc., depending on their areas of interest. With 20% of courses taught by international faculty, the School offers innovative, research-driven education, equipping students with a distinctly global outlook.



UNDERGRADUATE PROGRAMMES

The School of Engineering and Sciences (SEAS) at SRM University-AP, Amaravati, offers future-focused undergraduate programmes designed to build strong foundations in engineering and technology. With flexible curricula, hands-on learning and exposure to emerging fields, students are empowered to explore, innovate and shape their academic path toward becoming industry-ready engineering professionals.

PROGRAMMES OFFERED

B.Tech.

B.Tech. offers a strong foundation in engineering principles, hands-on learning and industry-relevant skills. At SRM University-AP, Amaravati students can specialise in various areas with access to world-class faculty, modern labs and global learning opportunities for career excellence.

COMPUTER SCIENCE & ENGINEERING

- Artificial Intelligence and Machine Learning
- Big Data Analytics
- Cyber Security
- Distributed and Cloud Computing
- Internet of Things (IoT)
- Software Product Engineering (Work Integrated Programme)
- AI & Future Technologies

ELECTRICAL & ELECTRONICS ENGINEERING

- Renewable Energy

ELECTRONICS & COMMUNICATION ENGINEERING

- Embedded Systems and IoT
- VLSI Design
- Advance Communication Systems
- Advanced Signal Processing with AI/ML

MICROELECTRONICS AND SEMICONDUCTORS

MECHANICAL ENGINEERING

- Additive Manufacturing
- Robotics and Automation

CIVIL ENGINEERING

- Structural Engineering
- Sustainable Construction Materials
- Geotechnical Engineering
- Water Resource Engineering
- Environmental Engineering
- Transportation Engineering
- Surveying and Geoinformatics Engineering
- Construction Management
- Drone Applications in Civil Engineering

B.Sc. / B.Sc. (Hons.)

B.Sc. offers in-depth knowledge and practical skills in cutting-edge science and technology fields. At SRM University-AP, Amaravati the curriculum is research-driven and industry-aligned, guided by expert faculty. Students gain hands-on experience and global exposure, preparing them for advanced studies and dynamic tech careers.

- **COMPUTER SCIENCE**
- **MATHEMATICS**
- **INTEGRATIVE BIOLOGY**
- **CHEMISTRY**
- **PHYSICS**

POSTGRADUATE PROGRAMMES

SRM University-AP, Amaravati, offers cutting-edge Postgraduate Programmes at the School of Engineering and Sciences. These programmes emphasise research, innovation and industry relevance, preparing students for advanced careers in technology. With expert faculty, well-equipped labs and global exposure, students gain the skills needed to lead in a rapidly evolving tech landscape.

PROGRAMMES OFFERED

M.Tech.

The M.Tech. equips students with advanced technical skills, research capabilities and industry insights. With specialisations in emerging areas, state-of-the-art labs and expert mentorship, students are prepared to lead innovations and excel in engineering & technology-driven industries.

ENVIRONMENTAL & SUSTAINABLE ENGINEERING

COMPUTER SCIENCE & ENGINEERING

- Artificial Intelligence & Machine Learning
- Data Science
- Cyber Security

ELECTRONICS & COMMUNICATION ENGINEERING

- IoT & Embedded Systems
- VLSI

MECHANICAL ENGINEERING

- Thermal Engineering
- Materials and Manufacturing

M.Sc.

M.Sc. programmes blend scientific theory with hands-on research. Designed to nurture analytical thinking and innovation, the curriculum includes emerging fields in science and technology. With global exposure and expert faculty, students are well-prepared for advanced research, industry roles, or doctoral studies.

MOLECULAR BIOLOGY & BIOTECHNOLOGY

CHEMISTRY

- General Chemistry
- Organic Chemistry
- Analytical Chemistry
- Computational Chemistry

ENVIRONMENTAL SCIENCE

MATHEMATICS

- Pure Mathematics
- Applied Mathematics
- Data Science and Industrial Mathematics

PHYSICS

- Quantum Technology (QT)
- Condensed Matter (CM)
- Astrophysics & Cosmology (AC)

DOCTORAL PROGRAMME

The Doctoral Programmes at the School of Engineering and Sciences, SRM University-AP, Amaravati, offer cutting-edge research opportunities in emerging technologies. With expert faculty, world-class labs and interdisciplinary collaboration, scholars are empowered to innovate, solve real-world problems and contribute significantly to global scientific and technological advancements.

PROGRAMME OFFERED

Ph.D.

Ph.D. fosters cutting-edge research and innovation. Scholars work under experienced faculty on interdisciplinary projects, using modern labs and global collaborations. The programme aims to develop future leaders in academia, R&D and industry through rigorous training and impactful discoveries.



AI INSTITUTE

The AI Institute at SRM University-AP represents a bold commitment to shaping the future of artificial intelligence through education, research, and innovation. Established in academic collaboration with the School of Computer Science, Carnegie Mellon University (CMU SCS), USA, a global leader in AI, this institute sets a benchmark for excellence in Artificial Intelligence and Machine Learning.

Anchored in its vision, the institute offers a forward-looking B.Tech. programme in Computer Science and Engineering with a specialisation in AI and ML, designed to equip students with both foundational depth and future-readiness. The curriculum, co-developed with CMU, integrates academic rigour, experiential learning and global exposure, with students benefitting from access to contemporary AI laboratories and the opportunity to undertake research internships at CMU under expert mentorship.



Purpose Beyond Programmes

The AI Institute extends its impact beyond undergraduate education. It serves as a collaborative platform for interdisciplinary research that brings AI into dialogue with diverse domains—biotechnology, environmental science, healthcare, and beyond. This intersectional approach advances knowledge while addressing complex, real-world challenges.



Industry as Ecosystem

The institute maintains dynamic engagement with leading technology enterprises, including Google, Microsoft, IBM and Infosys. These partnerships ensure that students are exposed to contemporary industry practices, emerging tools and application-driven learning, thereby enhancing their professional relevance and employability.



Entrepreneurial Thinking at the Core

Recognising that innovation thrives in entrepreneurial ecosystems, the AI Institute fosters a culture of idea-to-impact transformation. Through incubation centres, startup support frameworks and innovation clubs, students are encouraged to explore, prototype and launch viable tech-driven ventures.



Cultivating Future-Facing Professionals

The AI Institute's vision is not limited to technical proficiency. It aims to shape thoughtful, responsible and globally attuned AI professionals. By embedding ethical inquiry, critical thinking and a global outlook into its academic environment, the AI Institute prepares students to navigate and lead in a rapidly evolving AI landscape.

UNDERGRADUATE PROGRAMME

The AI Institute at SRM University-AP offers a future-ready undergraduate programme that blends an advanced curriculum, global collaborations as well as experiential learning to shape tomorrow's tech leaders. Students gain hands-on experience via research projects, industry internships and international exposure, promoting critical thinking, innovation and a better understanding of real-world AI applications.

PROGRAMME OFFERED

B.Tech. - CSE (AI/ML)

The B.Tech. CSE with specialisation in AI and ML at SRM University-AP, developed with Carnegie Mellon University, emphasises practical learning through capstone projects, internships and entrepreneurship initiatives, preparing graduates to lead in the rapidly evolving AI landscape.





**EASWARI
SCHOOL OF
LIBERAL ARTS**

CRAFTING SELVES. CURATING LEADERS.

EASWARI SCHOOL OF LIBERAL ARTS (ESLA)

With a robust, socially relevant and forward-thinking curriculum supported by a distinguished and dedicated faculty, the Easwari School of Liberal Arts stands out as a premier school for liberal arts education, particularly in southern India. The School has crafted a dynamic pedagogy that is abreast of India's revolutionising educational landscape and comprises eight departments – Literature & Languages, History, Psychology, Economics, Sociology & Anthropology, Political Sciences, Media Studies and Liberal Arts.



UNDERGRADUATE PROGRAMMES

The Easwari School of Liberal Arts at SRM University-AP, Amaravati, offers dynamic undergraduate programmes in Economics, English, Psychology and more. Blending critical thinking, creativity and interdisciplinary learning, the curriculum prepares students for diverse careers and global opportunities. Expert faculty and experiential learning empower students to become thoughtful, impactful professionals.

PROGRAMMES OFFERED

B.A. / B.A. (HONS.)

The B.A. / B.A. (Hons) offers an in-depth study in various disciplines. With a focus on critical thinking, creativity and research, students gain a strong academic foundation and practical skills for careers in education, media, policy and more.

ENGLISH

HISTORY

SOCIOLOGY/ ANTHROPOLOGY

- Introduction to Archaeological Anthropology
- Introduction to Physical Anthropology
- Anthropology of Senses
- Conversion Politics
- Sociology of Work
- Globalisation and Social Change
- Health System and Policy
- Work, Labour and Informality
- Science, Technology and Culture
- Gift Consumption and Exchange

POLITICAL SCIENCE

MEDIA STUDIES

B.Sc. / B.Sc. (HONS)

The B.Sc. / B.Sc. (Hons) offers a strong foundation in liberal arts and sciences, encouraging critical thinking and analytical skills. With a focus on experiential learning and interdisciplinary study, students gain the tools to address complex global challenges and pursue diverse career opportunities.

ECONOMICS

PSYCHOLOGY

DOCTORAL PROGRAMME

The Doctoral programme fosters original research and interdisciplinary scholarship. Guided by experienced faculty, scholars explore advanced topics in the Humanities and Social Sciences, contributing to knowledge and societal impact. The programme prepares candidates for academic, research and leadership roles across global platforms.

PROGRAMME OFFERED

Ph.D.

Ph.D. promotes rigorous research, cross-disciplinary thinking and scholarly growth. Students work closely with accomplished faculty to drive innovation and contribute meaningfully to their fields. The programme opens doors to careers in research, higher education and public policy.



PAARI SCHOOL OF BUSINESS (PSB)

Paari School of Business of SRM University–AP, Amaravati, is among the leading management schools nationwide, providing a global outlook and entrusting budding managers with administrative and managerial abilities. This PSB creates ground-breaking knowledge and socially aware, competent, innovative and business-ready entrepreneurs, leaders and managers ready to transform businesses, lives, and society. The core components defining these programmes at the Paari School of Business are academic rigour, business relevance and application-oriented learning. The unique curriculum proposes a holistic, modernised course covering all contemporary subjects in business, commerce and management studies, which empowers students to face challenges and meet the demands of the real corporate world. Courses such as Mind and Soul Training, Entrepreneurial Mindset and Samaj Seva further expand students' horizons, converting them into all-rounded, 21st-century-skills-equipped individuals.





MANAGEMENT

UNDERGRADUATE PROGRAMMES

Paari School of Business offers transformative undergraduate programmes that cultivate analytical acumen, entrepreneurial agility and global awareness. Rooted in innovation and experiential learning, these programmes empower students to become strategic thinkers and ethical leaders, prepared to navigate the complexities of tomorrow's business world with clarity, creativity and confidence.

PROGRAMMES OFFERED

BBA / BBA (HONS.)

The BBA cultivates strategic thinking, an entrepreneurial mindset and leadership skills. With global business insights and hands-on learning, it prepares students to thrive in complex, evolving markets as confident, future-ready professionals.

- **MARKETING**
- **FINANCE**
- **HUMAN RESOURCE MANAGEMENT**
- **OPERATIONS**
- **BUSINESS ANALYTICS**
- **ENTREPRENEURSHIP & FAMILY BUSINESS**

POSTGRADUATE PROGRAMMES

The Postgraduate programmes embody intellectual sophistication and strategic excellence. Designed for aspiring professionals and leaders, they blend rigorous academics with real-world engagement. Through immersive experiences, global exposure as well as industry integration, students emerge equipped to drive innovation, influence policy and excel in competitive, high-impact business environments.

PROGRAMME OFFERED

MBA

Paari's MBA programme blends strategic insight with global and Indian business perspectives. Designed for emerging leaders, it offers immersive learning, executive mentorship and real-world projects—empowering students to lead with purpose and drive impactful innovation.

- **MARKETING**
- **FINANCE**
- **HUMAN RESOURCE MANAGEMENT**
- **OPERATIONS**
- **BUSINESS ANALYTICS**
- **ENTREPRENEURSHIP & FAMILY BUSINESS**



DOCTORAL PROGRAMME

The Doctoral journey at Paari School of Business is a pursuit of scholarly distinction and transformative research. Anchored in intellectual depth and interdisciplinary inquiry, it nurtures thought leaders who redefine business paradigms, advance theory and contribute meaningfully to global academic and policy discourses. Excellence is not the goal; it is the foundation.

PROGRAMME OFFERED

Ph.D.

COMMERCE

UNDERGRADUATE PROGRAMMES

The undergraduate commerce programme merges classical principles with contemporary business insights. With a curriculum steeped in analytical precision, financial literacy and digital fluency, it empowers students to decode complex markets and drive sustainable growth. Graduates emerge as adaptive, ethically grounded professionals poised for leadership in evolving commercial landscapes

PROGRAMME OFFERED

B.Com.

The B.Com. integrates foundational commerce education with contemporary business acumen. Emphasising analytical precision, ethical leadership, as well as digital fluency, it equips students for multifaceted careers in finance, accounting and corporate strategy.

B.Com. (CA INTEGRATED)

B.Com. (FINTECH AND BANKING)

DOCTORAL PROGRAMME (Ph.D.)

The doctoral programme in commerce champions original research and intellectual distinction. With a focus on deep inquiry and interdisciplinary rigour, it prepares scholars to challenge conventions, inform global commerce and shape transformative policy. Guided by eminent faculty, doctoral candidates evolve into thought leaders redefining the contours of commercial scholarship.

PROGRAMME OFFERED

Ph.D.

DOCTORAL

WHERE THE BEST TEACH THE NEXT

SRM University-AP, Amaravati, boasts a distinguished faculty that seamlessly blends theoretical expertise with practical insights, delivering a holistic learning experience. Through a rigorous selection and induction process, the university has assembled a team of 400 faculty members recruited from prestigious institutions in India and abroad. The faculty brings deep domain expertise and extensive research experience, promoting an environment of academic excellence and innovation.



Mentors Who Shape Futures

FACULTY WITH GLOBAL GRIT AND REAL-WORLD WIT

92%

FACULTY WITH PH.D. FROM INSTITUTIONS WORLDWIDE

10%

FACULTY FROM THE INDUSTRY

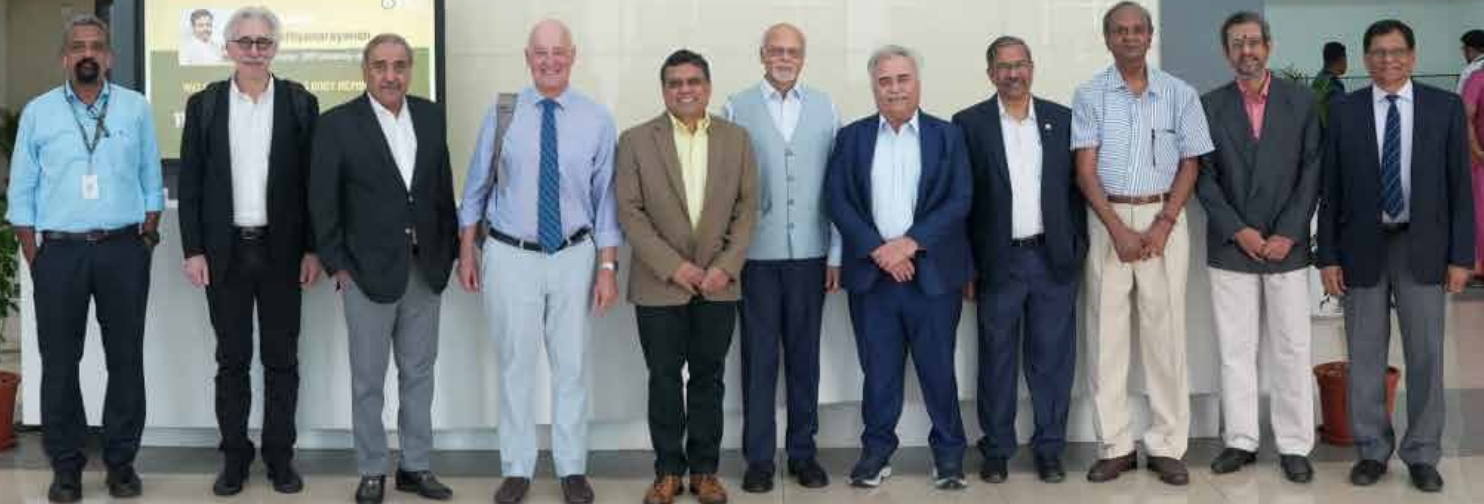
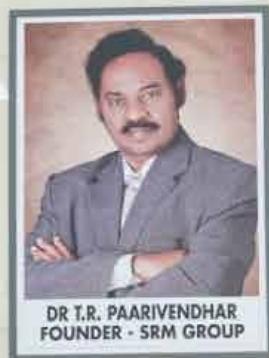
33%

FACULTY WITH INTERNATIONAL EXPOSURE

36%

FACULTY WITH POSTDOCTORAL EXPERIENCE

*As of July 2025



Mentors Who Shape Futures

MORE THAN A CAMPUS—

State-of-the-Art Facilities

SRM University-AP, Amaravati, offers state-of-the-art facilities, including smart classrooms with movable furniture for flexible learning, well-equipped teaching and research laboratories, and well-equipped computing facilities with HPC. The central library provides extensive academic resources, while active learning centres foster collaboration and innovation, ensuring an enriching educational experience for students and researchers.

- **130+ ICT-ready classrooms with movable furniture**
- **Advanced Computing Facilities, including HPC**
- **Central Library**
- **70+ Laboratories**
- **Active Learning Centres**

Sustainability & Smart Design

SRM University-AP, Amaravati, fosters Sustainability & Smart Design by amalgamating eco-friendly technologies, energy-efficient systems and smart urban planning. The university focuses on green architecture, renewable energy solutions and sustainable resource management. With research, innovation and education, the university nurtures future leaders dedicated to building resilient, smart and environmentally responsible communities.

- **Green buildings**
- **Solar power**
- **Water conservation**



A LEARNING ECOSYSTEM

Beyond Classrooms

At SRM AP, student life thrives beyond classrooms with a broad spectrum of extracurricular activities, including cultural clubs, sports and leadership programs. The campus offers convenience with diverse cafeterias, food courts serving multi-cuisine options, bank ATMs and a post office, ensuring a seamless and enriching experience for students in a dynamic environment.

- **Sports Facilities**
- **Cafeteria and Food Courts**
- **Auditorium, Theatre and Audio-Visual Studio**
- **Student clubs and cultural hubs**
- **Bank ATMs and Post Office**

A Home Away from Home

SRM University-AP, Amaravati, offers spacious hostels for 5300+ students, featuring AC and non-AC accommodations in 2, 3, and 4-sharing formats. The campus ensures well-being with a Health Centre, Wellness Centre, and Day Care.

- **Boys and Girls Hostels (AC and Non-AC)**
- **Health Centre and A Wellness Centre**
- **Gymnasium**



STEP IN WITH DREAMS. STEP OUT WITH DIRECTION.

At SRM University-AP, every student's journey is shaped by an ecosystem designed for exploration, innovation and excellence. The moment students step onto campus, they enter a world of possibilities, mentored by global faculty, powered by modern infrastructure and driven by a flexible, Outcome-Based Education (OBE) model that aligns with the highest academic and industry standards.

HIGHER STUDIES

From day one, students are encouraged to think beyond the classroom. Cutting-edge research centres and interdisciplinary labs nurture a strong foundation in innovation and inquiry, paving the way for prestigious scholarships, international collaborations, as well as admissions into top universities globally for higher studies.

PLACEMENTS

As students grow through hands-on learning, internships and collaborative projects, they also decipher powerful career pathways. SRM AP's dedicated Career Services team connects students with leading recruiters from India and abroad, ensuring stellar placements across dynamic sectors. The university's strong industry network and real-world exposure make its graduates highly employable and future-ready.

ENTREPRENEURSHIP

For those with an entrepreneurial spark, the Hatchlab Research Centre, SRM AP's in-house technology business incubator, offers mentorship, funding support, along with a thriving startup culture. Many student-led ventures have already taken flight from this vibrant platform.

Whether it's pursuing world-class research, launching a startup or securing a dream job, SRM University-AP provides the environment, resources and a global mindset that empower students to thrive, on campus and far beyond.





AN ECOSYSTEM OF IDEAS, INSIGHT AND INNOVATION

SRM University-AP, Amaravati, harbours a dynamic startup ecosystem, providing aspiring entrepreneurs with unparalleled support from corporations, industry enablers, world-class mentors and renowned institutions. Such resourceful collaborations tap into leading incubators, venture capitalists and government agencies to bestow funding, mentorship and infrastructure in the organisations.

To convert students and researchers' revolutionary ideas into successfully thriving businesses, dedicated innovation hubs, accelerator programmes and entrepreneurial cells are there to manage the execution of such initiatives. Global partnerships with enterprises and foundations open up access to world-leading technology, networking opportunities and market exposure. SRM-AP thus creates an innovative ambience through incubation, business pitching competitions and seed-funding schemes.

10X GROWTH STORY: STARTUP ECOSYSTEM SOARS FROM 2 TO 50+ IN JUST 4 YEARS

From just 2 incubated startups in 2021 to an impressive 54 in 2025, this rapid growth reflects the university's robust support system, world-class mentorship and cutting-edge infrastructure. As the numbers continue to rise, SRM AP, Amaravati, remains a hub for aspiring entrepreneurs, turning ideas into impactful ventures.

ENTREPRENEURSHIP & INNOVATION ECOSYSTEM

Hatchlab Research Centre (HRC): A Section 8 company serving as a technology business incubator, with 20+ MoUs signed with reputed companies and 40+ thriving start-ups.

IDEA (Innovation, Design, and Entrepreneurship Academy): Fostering "technology-centric" entrepreneurship through innovation and design-driven learning.

The Next Tech Lab (NTL): Enabling student-led innovations with exposure to cutting-edge fields like Deep Learning, Human-Computer Interaction and Computational Biology.

SUCCESS STORIES

Aditri – A women's entrepreneurship initiative that secured ₹2 crore in funding, empowering 125 micro-women entrepreneurs and supporting 200 villages across Andhra Pradesh.

Government-Backed Ventures – Three start-ups received early-stage seed funding through schemes sponsored by MeitY & MSME.

COMMUNITY ENGAGEMENT AND SOCIAL ENTREPRENEURSHIP (CESE)

The Community Engagement and Social Entrepreneurship (CESE) serves as a pivotal hub dedicated to fostering community development and social innovation. Recognising that India is a nation built on the strength of its villages, the Centre focuses on bridging the rural-urban divide by equipping students with the knowledge, skills and empathy necessary to work with and for diverse communities.

It advocates the significance of community development through self-help groups and stresses the health, well-being and empowerment of villagers. The CESE's social engagement mission integrates community knowledge with academic insights to address grassroots challenges. It enables students to understand the multi-dimensional nature of rural life by fostering awareness of literacy, employment, environmental sensitivity, energy safety, mental and spiritual health and simple living. By appreciating ancestral wisdom and lived experiences, students are encouraged to build mutual respect with communities and contribute meaningfully to national development.

CESE Participation Model: Five Modes of Community Engagement

- Engage
- Enrol / Contribute
- Energise / Collaborate
- Co-create
- Convergence / Enterprise

The Purpose

- Immerse students in real-world societal issues.
- Promote understanding of social structures and systemic challenges.
- Encourage the development of sustainable, actionable solutions.
- Equip students to implement these solutions effectively.

The Objectives

- Understanding Community Dynamics
- Fostering Cultural Competence
- Promoting Social Inclusion
- Ethical Engagement and Civic Participation
- Skill Development

The Focus Areas

- Advocacy
- Critical reflection
- Relationship-building

CENTRE FOR ENTREPRENEURIAL LEARNING (CEL)

The Centre for Entrepreneurial Learning (CEL) serves as a pivotal initiative aimed at nurturing an entrepreneurial mindset among students and fostering the growth of start-up ventures conceived within the university. As outlined in the founding proposal, CEL functions as a strategic mechanism aligned with SRM AP's academic mission and institutional priorities, offering integrated support to students and stakeholders.

The centre is committed to building institutional capacity for integrating entrepreneurial learning, incubation and social entrepreneurship. It achieves this through academic initiatives and active engagement in community-based projects. CEL plays a critical role in supporting both online and offline learning environments and positions SRM AP as a leader in entrepreneurship-related teaching, research and scholarship.

In terms of education, CEL supports curriculum development by delivering workshops, seminars and courses on various entrepreneurial topics, such as idea validation, social entrepreneurship and finance. It leverages industry expertise through guest lectures and provides online learning resources and certification programmes.

Beyond its academic contributions, CEL's impact extends through dedicated focus areas such as research, resource development, networking and operational capacity; each reinforcing its mission to drive entrepreneurial excellence.

Research Function

CEL advances entrepreneurial learning through original research and case studies on successes and failures to deepen student understanding.

Resource Development

The centre curates books, articles and case studies, offers research and analysis tools and connects students with investors and funding channels.

Networking

CEL hosts pitch competitions, events, and online forums to link students with entrepreneurs, educators and mentors nurturing a vibrant ecosystem.

Operational Capacity

It builds partnerships, enhances student services and collaborates with faculty and stakeholders to scale experiential and community-based learning.

THE ADITRI PROGRAMME

Empowering Rural Women Entrepreneurs through Innovation, Training and Market Access

Launched on March 13, 2024 by the Directorate of Entrepreneurship and Innovation at SRM University–AP, in collaboration with the Andhra Pradesh Innovation Society (APIS), the Aditri Programme is a transformative initiative designed to nurture aspiring women entrepreneurs from five neighbouring villages. A total of 150 rural women participated in hands-on training at the SRM AP campus, where they were introduced to the fundamentals of entrepreneurship and the broader entrepreneurial ecosystem, including government and university-led support mechanisms.

This initiative reflects SRM AP's commitment to inclusive and grassroots innovation by equipping rural women with the tools for self-reliance, sustainable business practices and long-term economic empowerment. Plans are underway to scale these bootcamps to the district level, enabling greater reach and continued skill development across Andhra Pradesh.

Building on a Culture of Innovation

Beyond the Aditri Programme, SRM AP's Directorate of Entrepreneurship and Innovation continues to make national strides:

- **₹3 Lakh grant** under the **MSME MeitY TIDE 2.0** scheme for enhancing retail experiences using AI, IoT and Blockchain.
- **₹15 Lakh grant** through **MSME Idea Hackathon 2.0** for a “Waste-to-Wealth Management” project that transforms dry and surplus organic waste into high-quality vegan leather.
- **₹15 Lakh grant** from **MSME Idea Hackathon 3.0** for a proposal on “Smart Automation with Self-Optimisation for a Clean Energy System.”



The Aditri Programme

ENTREPRENEURSHIP BOOT CAMP SERIES

The **Entrepreneurship Bootcamp (EBC)** at **SRM University-AP** is a high-impact initiative crafted to shape aspiring entrepreneurs into future-ready innovators. Organised by the **Directorate of Entrepreneurship and Innovation**, the bootcamp has become a cornerstone in the university's mission to empower students through experiential learning, expert guidance and access to real-world entrepreneurial ecosystems.

EBC 3.0: A New Era of Entrepreneurial Learning

The third edition, EBC 3.0, builds on the success of its predecessors and introduces an energised format — an 8-week entrepreneurial journey designed to turn promising ideas into viable ventures.

Participants benefit from:

- 10 expert-led workshops and interactive sessions covering idea validation, business modelling and pitching
- Hands-on mentoring from seasoned entrepreneurs and domain experts
- Access to funding and grant opportunities from both university-backed incubators and national programmes like MeitY GENESIS
- Pitching opportunities before investors, VCs and industry leaders
- A total prize pool of ₹5 Lakhs, with ₹50,000 prototype grants awarded to the top 10 ventures

During the Grand Demo Day held on May 2, 2025, 19 student business venture teams showcased their ideas before a national panel of jury members. The event featured more than 40 innovative pitches, with the top teams receiving financial support to continue developing their solutions.



Entrepreneurship Boot Camp Series

CAMPUS PLACEMENTS

-WHERE TALENT DELIVERS & CAREERS SOAR

SRM University-AP, Amaravati, is committed to bridging the gap between industry and academia by continuously producing highly skilled graduates who align with current market trends and demands. The university prioritises preparing students to get industry-ready, equipping them with the necessary soft skills and professional expertise. Over the course of years, the number of Super Dream, Marquee, and International placements at the university has soared robustly. The strong collaboration between the institution and the leading firms in the industry plays a vital role in achieving outstanding placement records. The placement team actively organises campus recruitment programmes and trains the students, ensuring secure job opportunities in esteemed organisations.

PLACEMENTS SNAPSHOT

850+

Recruitment
Partners

55 LPA

(Engineering)

Highest Package
Offered

9.59 LPA

(Engineering)

Average Package
Offered

31 LPA

(Management)

Highest Package
Offered

9.42 LPA

(Overall)

Average Package
Offered

*Placements of 2025 still continuing

SRM University-AP's Amaravati Destination Programme is a unique initiative designed to prepare students for thriving careers in international markets, with a strong focus on Japan. Through intensive training and language immersion, the programme equips students to secure competitive job placements in Japan. Graduates from the Class of 2024 have successfully secured offers with packages as high as ₹40 LPA, continuing a trend that began with our very first batch of placed students.

To further expand global opportunities, SRM AP introduced German language training in 2024, complementing the well-established Japanese programme. This strategic addition opens new doors for students aiming to pursue careers in Germany's highly specialised industries.

The university has recorded impressive placement outcomes. To date, the highest international package stands at ₹52 LPA for engineering graduates and ₹26.7 LPA for management students. The average CTC for the 2024 batch reflects this strong placement performance.

BUILDING CAREERS WITH THE BEST: OUR TOP RECRUITING PARTNERS

TOSHIBA



Lenovo



J.P.Morgan



PHILIPS

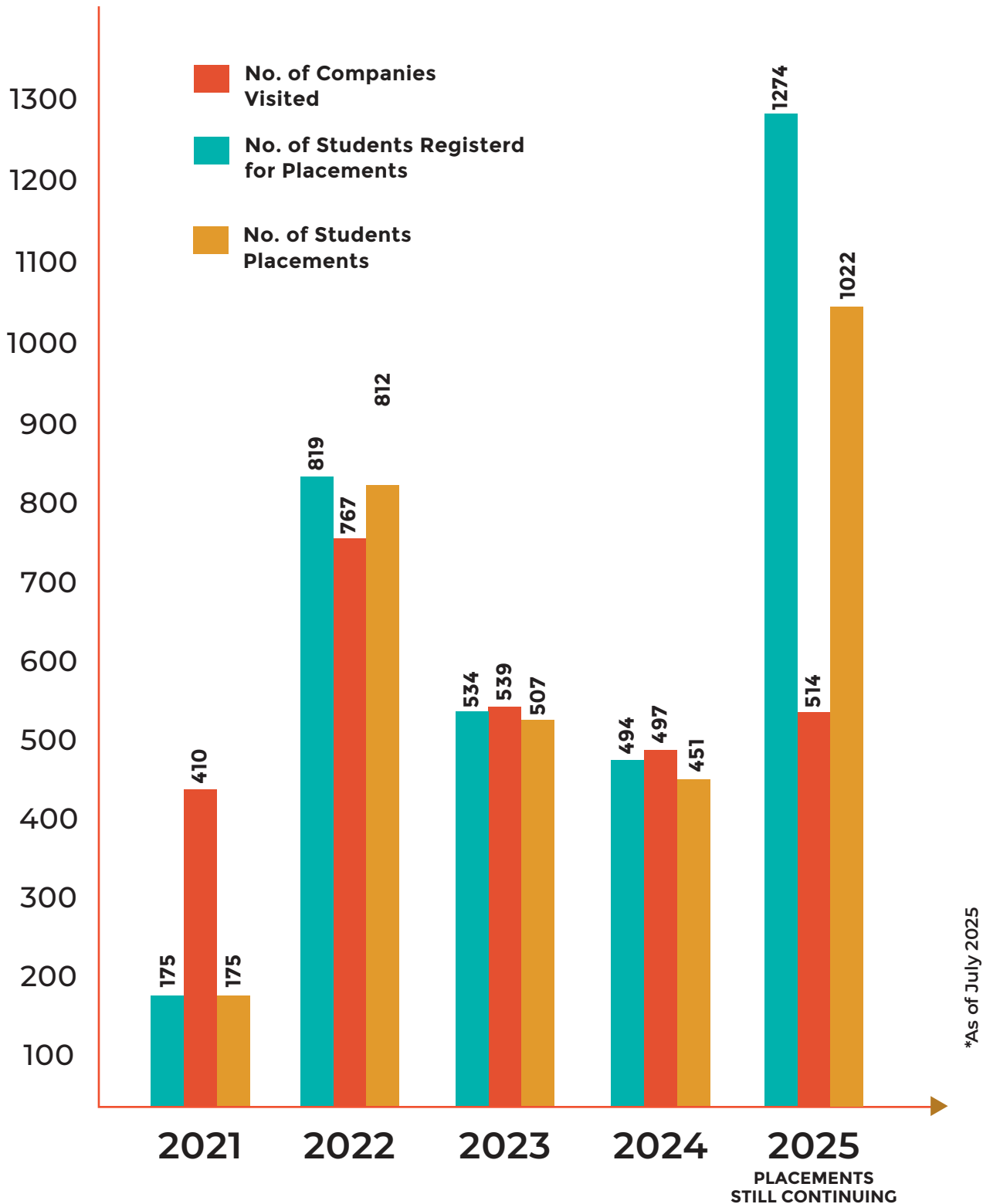


PLACEMENT STATISTICS OVER THE YEARS

The Placement Statistics highlight SRM University-AP, Amaravati's increasing recruitment success. The number of companies visiting grew significantly, with 767 in 2022. Student registrations and placements peaked in 2025 at 1,212 and 819, respectively. The placement percentage also showed steady improvement, reflecting the university's strong industry connections and career support



MORE OPPORTUNITIES, MORE SUCCESS



A LAUNCHPAD FOR GLOBAL ACADEMIC SUCCESS

GLOBAL REACH: 260+ STUDENTS, 38 COUNTRIES

SRM University-AP's, Amaravati strong academic foundation and global exposure ensure high acceptance rates for postgraduate and doctoral studies. Students are consistently admitted to renowned institutions, making their transition to advanced education smooth and impactful.

20% SECURED GLOBAL ADMISSIONS WITH \$60K SCHOLARSHIPS

Every year, one in five SRM AP, Amaravati students gains entry into world-class universities, many with substantial scholarships. Awards as high as \$60,000 enable access to prestigious programmes, reinforcing SRM AP, Amaravati's commitment to global academic mobility.

41 STUDENTS SECURE LEADING USA SCHOLARSHIPS

Dozens of SRM AP, Amaravati students have received elite scholarships from top U.S. universities, recognising their academic excellence and potential. These competitive awards open doors to transformative research, mentorship and career opportunities abroad.

AI RESEARCH LAB LAUNCHED WITH CARNEGIE MELLON UNIVERSITY

In partnership with Carnegie Mellon University, SRM AP, Amaravati has established a pioneering AI Research Lab to promote interdisciplinary innovation. The lab focuses on avant-garde research, global AI challenges, as well as skill development for students and faculty.

76 INTERNATIONAL COLLABORATIONS FOR ACADEMIC EXCELLENCE

With more than 65 active international partnerships, SRM AP, Amaravati facilitates student exchange, joint research and dual-degree programmes. These collaborations enrich academic learning and position students for success in a globally intertwined world.

155 STUDENTS TO TOP QS UNIVERSITIES (INCLUDING QS #5 & #8)

Over 150 SRM AP, Amaravati students have secured placements in globally top-ranked institutions such as the National College of Ireland and NUS Singapore, underscoring the university's emphasis on competitive academics and global readiness.

HARVARD BUSINESS PUBLISHING PARTNERSHIP FOR MODERN MANAGEMENT PROGRAMMES

Through its alliance with Harvard Business Publishing Education, the Paari School of Business offers advanced curricula, amalgamating case studies, business simulations and industry, preparing students with pertinent skills for leadership in the global business arena.



MOUs WITH 76 GLOBAL UNIVERSITIES



THE FUTURE IS BUILT HERE: RESEARCH & INNOVATION

With a strategic goal to intensify research and entrepreneurial spirit, SRM University-AP, Amaravati has anchored a world-class research infrastructure and a thriving ecosystem facilitating cutting-edge research. The university's research cohort innovates, invents and exports novel ideas that catalyse new-age advancements. The institute fosters cutting-edge discovery through advanced laboratories, high-performance computing facilities and interdisciplinary research centres. Strong industry collaborations, projects funded by the government and international partnerships further enhance the research impact. The university turns the ideas of young innovators into world-class solutions and enables them to join start-up companies propelling technology and society ahead.

- **Research Publications in Q1 Journals**
- **Patents and Commercialisation**
- **Industry Readiness**
- **Interdisciplinary Centres and Research**
- **National Missions and Sponsored Research**
- **Industry Collaborations**
- **Global Connect**



INNOVATION POWERHOUSES

8 INTERDISCIPLINARY RESEARCH CENTRES

SRM AMARA RAJA CENTRE FOR ENERGY STORAGE DEVICES

The SRM Amara Raja Centre for Energy Storage Devices (CESD) at SRM University-AP, Amaravati is a premier research hub dedicated to pioneering next-generation battery technologies. In collaboration with Amara Raja Batteries Ltd., the Centre focuses on developing low-cost, fast-charging lithium-ion batteries tailored for India's e-mobility landscape. Equipped with state-of-the-art facilities, CESD emphasises interdisciplinary research, including 3d-printed porous electrodes and high ionic conductivity electrolytes, aligning with India's mission for sustainable, all-electric mobility by 2030. By bridging academia and industry, CESD aims to revolutionise energy storage solutions, fostering a cleaner, more connected future.

CENTRE FOR PIONEERING STUDIES IN GOLD AND SILVER

The Centre for Pioneering Studies in Gold and Silver at SRM University-AP, Amaravati is a premier interdisciplinary research hub dedicated to advancing the metallurgy of precious metals. Collaborating with industry leaders like Titan's Tanishq and Waman Hari Pethe & Sons, the Centre focuses on developing high-strength 22K gold alloys, tarnish-resistant silver and novel colour variants. Equipped with modern facilities, including induction melting furnaces, advanced characterisation tools and surface engineering labs, it bridges academic research with industrial innovation, setting new benchmarks in jewellery manufacturing and material science.



CENTRE FOR CONSUMER RESEARCH IN INDIA

The Centre for Consumer Research in India (CCRI) is an epicentre of impactful scientific discovery that drives empirical, India-specific insights into consumer behaviour. It fosters cutting-edge studies in areas like digital marketing, green consumerism, rural outreach and ethical branding. Through industry-funded projects, consulting and policy recommendations, CCRI bridges academia and business. Its global advisory board, featuring scholars from NYU, Cornell and Nanyang Technological University, ensures world-class research and thought leadership. CCRI also offers short-term courses and facilitates live industry projects, equipping students and professionals with actionable consumer intelligence.

THE CENTRE FOR DRONE TECHNOLOGY

The Centre for Drone Technology (CDT) drives excellence in drone technology through focused research, pilot training and industrial integration. As an RPTO-certified centre, it offers capabilities in UAV design, analytics and deployment. Backed by strong international collaborations, CDT develops future-ready professionals for high-impact applications in aerial innovation. With advanced simulation labs, customised training modules and real-time field projects, the centre fosters hands-on expertise. CDT also engages in consultancy, regulatory guidance and joint ventures, addressing real-world challenges through scalable, tech-driven aerial solutions.

CENTRE FOR GEOSPATIAL TECHNOLOGY

The Centre for Geospatial Technology (CGT) at SRM University-AP, Amaravati is an interdisciplinary research hub dedicated to advancing geospatial science and its applications. CGT focuses on areas such as renewable resource assessment, disaster management, groundwater depletion and socio-economic development. It offers services including geospatial database creation, expert consultation and various development programmes. The centre is equipped with advanced facilities like ArcGIS software, UAVs for remote data acquisition and high-performance computing resources. Collaborations with organisations like the Andhra Pradesh Space Applications Centre (APSAC) enhance its research and training capabilities.

CENTRE OF EXCELLENCE FOR ELECTRONICS COOLING

The Centre of Excellence for Electronics Cooling (CoEEC), SPOKE, serves as a research-driven platform for thermal management solutions in electronics. In collaboration with Intel R&D, it empowers students through rigorous training, live industry projects and problem-solving frameworks. The Centre fosters innovation in sustainable electronics and next-gen cooling technologies.

CENTRE OF COMPUTATIONAL AND INTEGRATIVE SCIENCES

The Centre of Computational and Integrative Sciences is a multidisciplinary research hub dedicated to solving complex scientific problems through advanced computational methodologies. CCIS promotes collaborative inquiry across domains, spanning materials genome, photo-functional materials, AI/ML for energy, computational fluid dynamics and bioinformatics. With its mission-aligned focus on integrative research, the centre serves as a catalyst for innovation, bridging disciplines to accelerate discovery and elevate SRM AP, Amaravati's standing as a research-intensive institution.

CENTRE OF INTERDISCIPLINARY RESEARCH

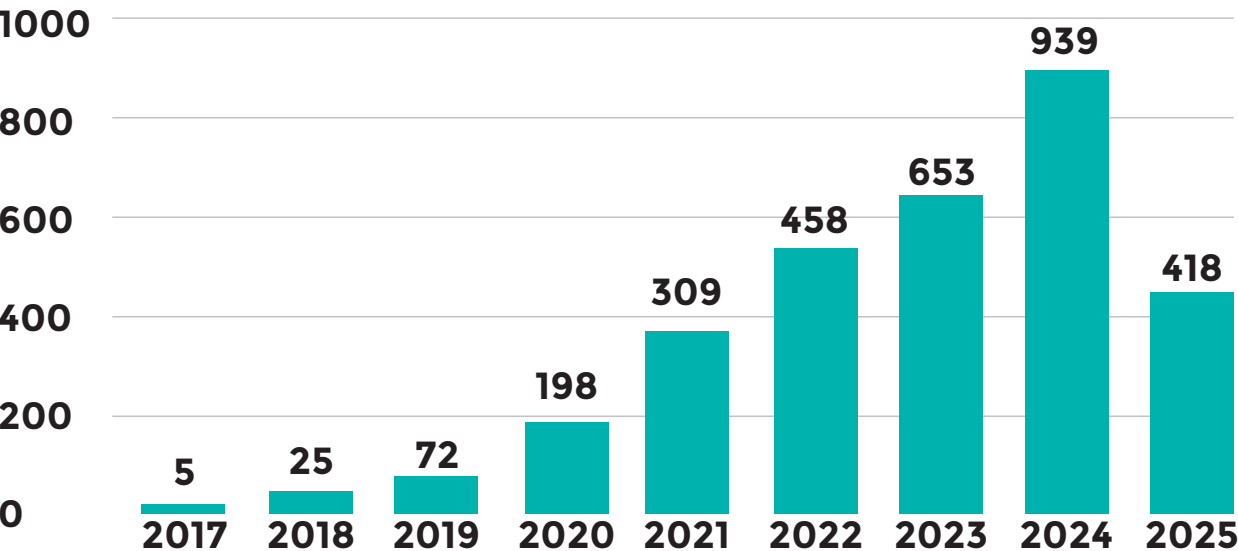
The Centre for Interdisciplinary Research (CIDR) provides a dedicated platform for research that transcends traditional academic boundaries. CIDR integrates fundamental and applied research to address global challenges in areas such as food security, environmental sustainability and socio-economic development. Through strategic interdisciplinary collaboration, CIDR drives impactful discoveries that support the university's commitment to global research excellence and the achievement of Sustainable Development Goals (SDGs).



RESEARCH SNAPSHOT

YEAR-WISE PUBLICATIONS*

*As per accepted data



*As of July 2025

PUBLICATIONS*

*Scopus & WOS

3327

JOURNALS



54%

NATURE INDEX



70

CITATIONS-SCOPUS

26012

H-INDEX

67

IEEE TRANS..

33

ABDC A*/A

9

I F > 10

173

PhD STUDENTS

446

PhD GRADUATED

69

PATENTS PUBLISHED & GRANTED

514/60

PROJECT SNO & AMOUNT (CR.) INR

105/38.62Cr

Industry/Cons-no & Amt.(CR.)INR

37/5.28Cr

Research Labs

74

*As of July 2025

ALUMNI RELATIONS

The Alumni Committee at SRM University-AP, functioning under the Directorate of Alumni Relations, plays an essential role in fostering lifelong relationships between the university and its graduates. This student-led committee is structured into three core teams: the Alumni Relationship Team, the Operations Team and the Promotions Team. The Alumni Relationship Team focuses on engaging alumni through regular communication and support, while the Operations Team manages the backend operations, including maintaining the alumni database, overseeing events and ensuring logistical efficiency. The Promotions Team is responsible for creating and managing content across digital platforms to ensure a vibrant and well-connected alumni network.

ENGAGEMENT EVENTS

SRM University-AP organises regular alumni events to strengthen ties and celebrate alumni achievements. These include the 1st Alumni Day held offline on January 12, 2024, with 82 alumni attending, followed by the 2nd Alumni Day conducted online on August 24, 2024, which saw 61 attendees. Additionally, the first Alumni Meet in Pune took place on March 22, 2025, with the participation of 25 alumni. These events serve as vital platforms for networking, mentoring and fostering a sense of community.



Distinguished Alumni Members

CELEBRATING ALUMNI ACHIEVEMENTS

The university takes pride in the accomplishments of its alumni, who have excelled across industries and academic pursuits. Noteworthy achievements include over 15 patents filed by alumni teams in CSE and ECE, supported by SRM faculty mentorship and grants from the Indian Patent Office. Prominent alumni include Nadella Ram Narayan Chowdary, BBA (Batch of 2021), Assistant Director of the Telugu film Dasara; Ramya Gumadavalli, B.Tech. CSE (Batch of 2021), a published lyricist featured on Star Sports; Aaditya Jain B.Tech. CSE (Batch of 2021), a contributor to Brainz Magazine; Bismark Razak Haruna B.Tech. ME (Batch of 2021), a JST Prize winner at the SAMI8 Conference; and Vuna Sai Likitha B.Tech. ECE (Batch of 2021), who has secured positions with DRDO, BEL, AAI, IB and ISRO.

FOSTERING ENTREPRENEURSHIP

The entrepreneurial landscape among SRM AP alumni is equally impressive, with 15 alumni-founded ventures and four graduates taking over family businesses. These include Found Around Me, founded by Akhil Vulli, BBA (Batch of 2022), which won EBC 2.0; X'presso, co-founded by Darbar Shaik, BBA (Batch of 2022) and Palti Shri Satya Krushna, B.Tech. ME (Batch of 2022); Zoth, a blockchain firm co-founded by Koushik Bhargav, B.Tech. CSE (Batch of 2021); Grad Voyage Consulting, by Gadde Nikhil, B.Tech CSE (Batch of 2022) and Mohan Sai Krishna B.Tech CSE (Batch of 2022); Regux Partners, founded by Maddala S.S.L. Rajeswari Rashmika, MBA (Batch of 2023); and Vixon Pvt Ltd., by Avinash Rayudu, B.Tech ECE (Batch of 2023) and Gopi Chand Busam B.Tech ECE (Batch of 2023).

ALUMNI CONTRIBUTIONS TO THE UNIVERSITY COMMUNITY

Alumni also actively contribute to the university community by creating opportunities for current students. Aaditya Jain has facilitated internships in Germany, while Koushik Bhargav and the team behind X'presso have recruited SRM AP graduates and interns for their respective ventures. The university supports these endeavours by offering entrepreneurship grants, such as those awarded to Akhil Vulli and Ramya Gumadavalli through the SRM AP Entrepreneurship Bootcamp. Further, alumni like Manasa Thippavajjula (BBA 2022), who pursued an MBA at Imperial College London with an SRM AP Presidential Scholarship, exemplify the university's commitment to academic excellence. The Career Centre (CRCS) also provides ongoing support by connecting alumni with employment opportunities and professional networks.



**FEELS LIKE
HOME**

**THE
CAMPUS THAT**



Campus life at SRM University-AP, Amaravati transcends traditional academics, offering a vibrant fusion of community, creativity and global connection. Students from across India and the world come together in an inclusive environment that blends curricular, co-curricular and extracurricular pursuits. From spirited sports and outdoor recreation to collaborative discussions and quiet study zones, every space is alive with purpose. World-class infrastructure fuels dynamic interactions, while clubs, societies, and cultural events empower students to explore their passions and grow into confident leaders. Here, learning extends beyond the classroom—it's a lifestyle where students build friendships, embrace diversity, and shape their own success stories.



STUDENT CLUBS

The university has 25+ student clubs and societies, thus creating an environment where students develop academically and personally. Clubs serve a multitude of interests, from technology to arts, music, dance, literature and social service—all of which serve to foster students' interests. Leadership, Debate Forums and Entrepreneurship are three activities emphasising skill enhancement. Workshops, contests, and cultural festivals expand students' creativity, enhance teamwork and hone networking skills. Sports clubs and fitness initiatives encourage healthy lifestyles, ensuring holistic growth. With the active participation of students in these colourful communities, they build confidence, boost interpersonal skills and create lasting memories, making their university experience worth remembering.

NSO CLUBS

The NSO Club is a dynamic nexus for athletic spirit, offering students a rich spectrum of sports, from cricket and outdoor games to indoor challenges and high-energy racket sports. Designed for both seasoned athletes and eager novices, the club champions holistic wellness, teamwork and disciplined recreation. As a member, students hone physical agility, strategic thinking and camaraderie through competitive play and spirited community.



Cricket Club



Volleyball Club



Football Club



Kabaddi Club



Athletic Club



Basketball Club



Gymnasium Club



Table Tennis Club



Carrom Club



Fitness Club



Chess Club



Tennis Club



Badminton Club

Joining NSO Clubs will not only cultivate fitness but also nurture leadership and resilience, empowering individuals to thrive on and off the field. It is where passion for sport meets purpose-driven personal growth.





SELF-DEVELOPMENT CLUBS

The Self Development Clubs offer a transformative platform for personal evolution, mental well-being and skill refinement. Encompassing niche collectives like e-sports, quiz and cubic clubs, alongside the Wellness Club and Yoga & Meditation Club, this ecosystem nurtures cognitive sharpness, emotional balance and inner resilience. Students engage in intellectually stimulating and mindfully enriching activities that cultivate self-awareness, focus, and confidence.



Psychology Club



Wellness Club



**Brain and Mind
Strategic Games**



E-Sports



Quiz Club



Anime Club



Cubing Club



**Yoga &
Meditation Club**

Joining this club fosters a culture of self-mastery and peer-driven support, empowering individuals to thrive academically, socially and emotionally. It is not just a club, but a journey toward holistic growth and empowered living.

ACADEMIC & PROFESSIONAL CLUBS

The Academic and Professional Clubs form a powerhouse ecosystem for innovators, strategists and creators. Housing elite collectives, the club transforms curiosity into capability. Members gain access to real-world projects, industry networking and leadership opportunities, fostering technical mastery, entrepreneurial spirit and professional polish.



Coding Club



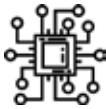
Smart Tech Club



Functional
Management Club



Autonomous
Vehicle Club



Electronics System
Design Club



Maths Club



SEDS
SRMAP



Professional
Club



E-Cell

Joining these clubs means working on cutting-edge technologies, launching ventures and competing at national levels, equipping students with the acumen, agility and credentials to thrive in today's competitive landscape. It's where passion meets purpose.





ARTS AND CULTURE CLUBS

The Arts and Culture Clubs are a thriving canvas of creativity, uniting students through the visual, performing and production arts. Comprising the various clubs, it nurtures talents in photography, music, theatre, dance and design. Here, artistic minds find their voice, stage and medium to express, innovate and inspire. Through curated events, collaborative showcases and immersive workshops, members hone their craft, gain confidence and contribute to a vibrant cultural ecosystem.



Theater Club



Music Club



Dance Club



Cinemate Club



Photography Club



Creative Arts Club

Joining the club offers not just creative expression, but a community that celebrates imagination, diversity and excellence

COMMUNICATION & CRITICAL THINKING CLUBS

The Communication & Critical Thinking Clubs are a confluence of curiosity, creativity and intellectual depth. Consisting of varied clubs, it cultivates expressive clarity, reflective dialogue and cultural consciousness. Whether through painting, crafts, writing, or the exploration of historical narratives, members engage in meaningful discourse and sharpen their analytical acumen. This club empowers students to communicate with conviction, think critically and appreciate diverse perspectives.

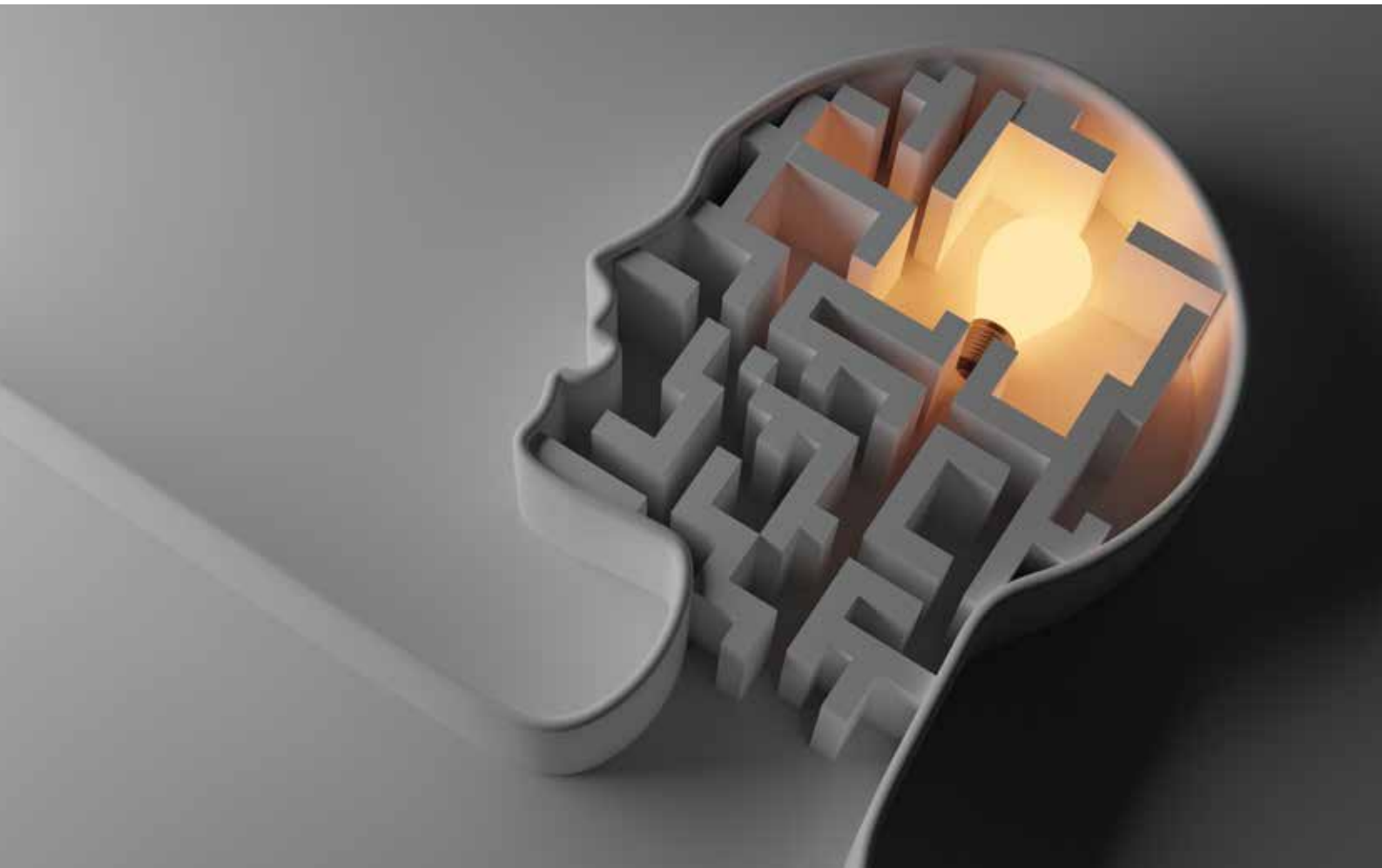


Acts Club



**History and
Heritage Club**

Joining this vibrant community fosters personal insight, artistic fluency and a deeper connection to global heritage, equipping members to lead with both intellect and empathy.



THE LIBRARY WHERE KNOWLEDGE NEVER SLEEPS

The University Library, built in 2017 as per UGC norms, has evolved into a modern resource hub. It offers air-conditioned spaces and an extensive collection, including 27,000+ books, 200,000+ e-books, 7,000+ e-journals, CD-ROMs, dissertations and nine online databases. The library features dedicated sections for textbooks, reference materials, reading halls, journals and current periodicals.

Staffed by qualified library professionals and supported by the University Library Committee, the library operates on e-Varsity software with RFID tagging and an Online Public Access Catalogue (OPAC) for efficient resource management. A digital section with desktops, high-speed internet and campus-wide Wi-Fi ensures seamless access to global information resources. The library offers membership to the National Digital Library (NDLI) and access to top-tier online resources such as IEEE, SPRINGER, JSTOR, EPW, J-GATE and Turnitin. Regular training sessions, workshops, and book exhibitions are conducted to enhance user awareness.

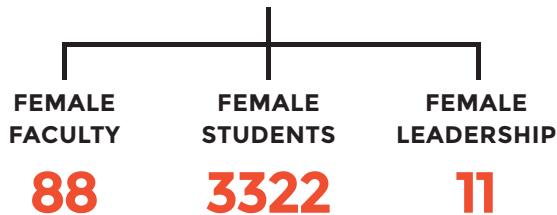
The library continues to invest in expanding its digital and electronic resources, remaining a vital academic support centre for students, faculty and researchers.



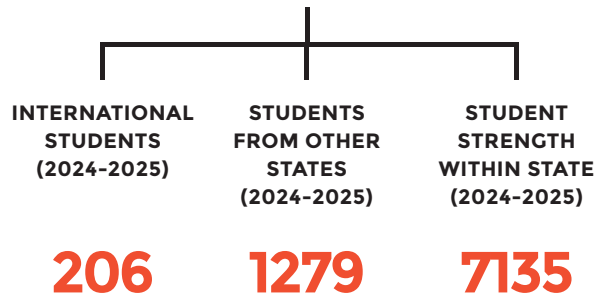
WOMEN LEADING. CULTURES BLENDING. EXCELLENCE THRIVING. DIVERSITY AT SRM AP, AMARAVATI

SRM AP, Amaravati celebrates the vibrant diversity and inclusivity in the campus. With over 3,300 female students, 88 female faculty and 11 women in leadership roles, the university champions gender equity. The campus brings together 206 international students, 1,279 students from other Indian states and 7,135 from within the state, highlighting cultural richness and nationwide appeal. SRM AP, Amaravati fosters a global, multicultural environment where excellence thrives and cultures blend. The central image reflects unity, collaboration and youthful dynamism, showcasing a campus that welcomes diversity as a strength and empowers students from all backgrounds to lead, grow and succeed.

GENDER DIVERSITY



CULTURAL DIVERSITY



*As of July 2025



SRM AP, AMARAVATI WELLNESS CENTRE AND HEALTH CENTRE

Wellness Centre

The Wellness Centre offers a supportive environment for individuals to commence their journey towards holistic wellness.



Health Centre

The university health centre is the primary health care provider for the students, faculty, staff and their dependents working/residing on the university campus. Our accredited team of doctors, nurses and counsellors impart a wide range of services from medical treatment to common illnesses, emergency care, health education through medical camps and wellness programmes etc.



RISING

Sporting Glory on Global & National Stages



DEEPTHI JEEVANJI

B.Com. - Batch of 2025

Bronze Medalist in 400m at the Paralympics 2024 and recipient of the Arjuna Award

KUNJA RAJITHA

B.Com. - Batch of 2027

Gold Medal in Women's 4x400m Relay at the 26th Asian Athletics Championship 2025.



Ms. BUDDER SHANMUKHI NAGA SAI

B.Com. - Batch of 2027

Broke two world records and won three silver medals at the Singapore 2025 Asia Cup Leg 2.

EVEREST BASE CAMP

SRM University-AP organised an adventure trip to Mt. Everest.



STARS

Academic Excellence & Prestigious Recognitions



NILESH A

B.Sc. Economics - Batch of 2023

He secured a prestigious internship at the Reserve Bank of India

MS. KAAVYA R

M.Sc. Mathematics - Batch of 2027

She received the prestigious Mitacs Globalink Research Award.



MOHAMMAD AHMAD RAZA KHAN & MD HADI MAHMOOD

B.Tech. CSE - Batch of 2028

For their remarkable achievement in the Nation Building Case Study Competition 2025, clinching 1st Place in the South Zone and securing 1st Runner-Up in the National Finals

SRM AP'S TEAM

2nd Place in the Open Innovation Sector at the BITS Pilani, Hyderabad Hackathon



& MANY MORE...

AWARDS &

2025



SRM University-AP, Amaravati has been awarded a stellar AAAAAA rating by Careers360 in its 2025 rankings of India's Best Engineering Colleges – South Zone (Central/Deemed/State Private Universities).

Outlook

The Outlook magazine, in collaboration with ICARE (Indian Centre for Academic Rankings and Excellence), has chosen SRM University-AP, Amaravati as one of the "Iconic Institutions to Look Out for in 2025."



SRM University-AP, Amaravati Ranked No.1 in Times All India Engineering Institutes Ranking Survey 2025 under 3 categories:

- TOP EMERGING ENGINEERING INSTITUTES
- EMERGING ENGINEERING INSTITUTES-PLACEMENT
- EMERGING ENGINEERING INSTITUTES - RESEARCH CAPABILITY



Ranked No.1 in the New-Age Emerging University category by the prestigious IIRF 2025.

Natioanl Rank | South Zone Rank | State Rank

ACCOLADES



SRM University-AP, Amaravati has been awarded by Hans India:

- NATIONAL BEST PRIVATE UNIVERSITY
 - BEST BUSINESS SCHOOL IN ANDHRA PRADESH
 - EXCELLENCE IN SMART CAMPUS & CLASSROOM INFRASTRUCTURE
-



SRM University-AP, Amaravati has been Ranked the following in India's Best Young University by Careers360

- NO. 1 IN BEST IN ENGINEERING PRIVATE UNIVERSITY
 - NO. 3 IN BEST PRIVATE YOUNG UNIVERSITY
-



SRM University-AP, Amaravati has been awarded Best Young Indian University by Careers360 in 2025



SRM University-AP, Amaravati has been awarded Best Placement Performance University by Asia Today Media 2025

2024

THE ACADEMIC
INSIGHTS

Recognised Paari School of Business as the Business School of the Year 2024 (Innovation in Management Education)

THE ACADEMIC
INSIGHTS

Recognised Paari School of Business in the Top 10 Business Analytics Colleges in India (2024)

2023

nature index

India's Third Best Private University consequently for two years (2023 & 2022)

CAREERS360
THE COMPLETE CAREER MAGAZINE

Ranked First among Best Young Indian Universities (Private Engineering Category)

2022

THE ACADEMIC
INSIGHTS

Innovative University of the Year 2022 for Premium Student Experiences

KNOWLEDGEREVUE™
Education. Innovation. Success

Recognised as The Most Dynamic Liberal Arts Institutes of the year

2021

TIMES ALL INDIA
ENGINEERING INSTITUTES
RANKING SURVEY 2024

SRM University-AP, Amaravati ranked as the second Top Emerging Engineering Institute

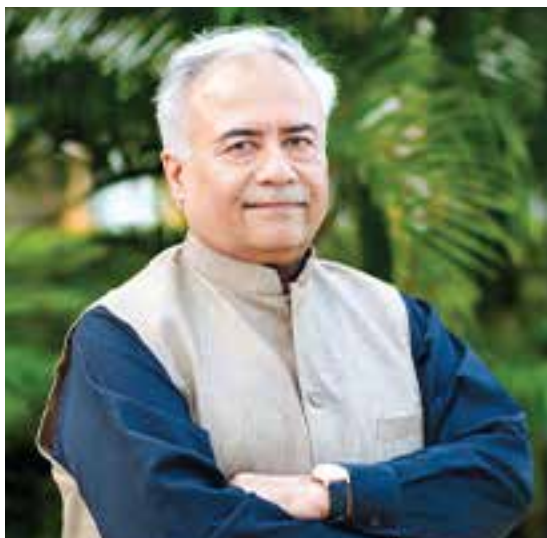
siliconindia

Recognised in the Top 10 Private Universities

INDIA
TODAY

Top Promising Engineering University in India





Prof. Manoj K Arora Vice-Chancellor

At SRM University-AP, we don't just prepare students for today's careers; we equip them to face the challenges of tomorrow. As we look ahead, our mission remains steadfast: to be a crucible of transformative education that shapes minds, builds character and inspires impact, both locally and globally.

SRM University-AP, Amaravati, was conceived as a progressive institution with a bold vision to ignite a new paradigm in higher education: one where ambition meets purpose and innovation meets excellence. Today, we are proud to see that vision come to life.

In under a decade, SRM University-AP has emerged as a national leader in private higher education, setting new standards in academic infrastructure. Our community of students, faculty and alumni is the true testament to our growth. Their achievements in research, innovation, entrepreneurship and global engagement continue to push boundaries.



Prof. Ch. Satish Kumar Pro-Vice Chancellor

academic network has paved the way for institutional excellence in academics, research, entrepreneurship and graduate outcomes. We will continue to impart knowledge, ensuring that our university remains internationally competitive and nationally relevant.

With a pioneering vision to create a global educational institute, SRM University-AP, Amaravati, is a convergence of innovation, excellence and impact. The university drives quality education with scientific inquiry and holistic education at the heart of its endeavours, extending our impact beyond national borders.

Beyond academics and research, our mission to catalyse regional transformation is reflected in our community engagement initiatives, industry collaboration and the strong focus on entrepreneurship.

Today, our commitment to building a global



DRIVEN BY KNOWLEDGE, DEFINED BY PURPOSE



CONTACT DETAILS

SRM University-AP, Amaravati Neerukonda, Mangalagiri Mandal,
Guntur District, Andhra Pradesh – 522240

<https://srmap.edu.in/>